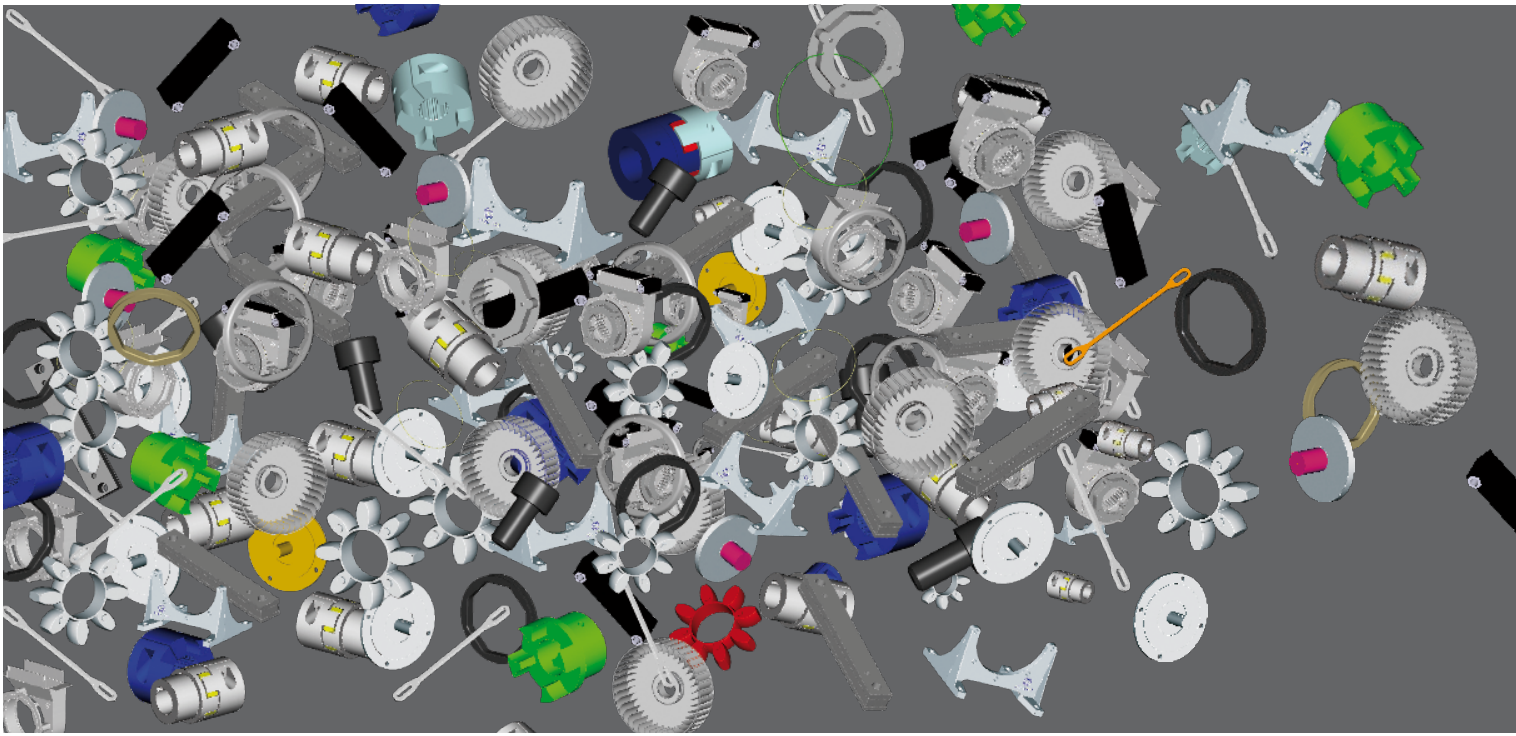


ARE YOU WASTING TIME?

We'll make up for it

www.fluidware3d.com

FLUIDWARE® 3D
ACCELERATING YOUR PROGRESS



THE GIFT OF TIME

Configure 3D assembly groups online

FLUIDWARE®3D distinguishes itself from ordinary configuration tools because it supports the design engineer in the search for the correct components by requiring only a few sensible selection steps and performing only the feasible options. In just a few minutes the user has completed the properly-configured assembly group and all relevant components are available as a 3D model immediately after configuration. FLUIDWARE®3D makes the design engineer's work much easier and thus saves valuable time - each and every day.

www.fluidware3d.com

Additional configurators e.g. for oil tanks and oil coolers are being prepared.

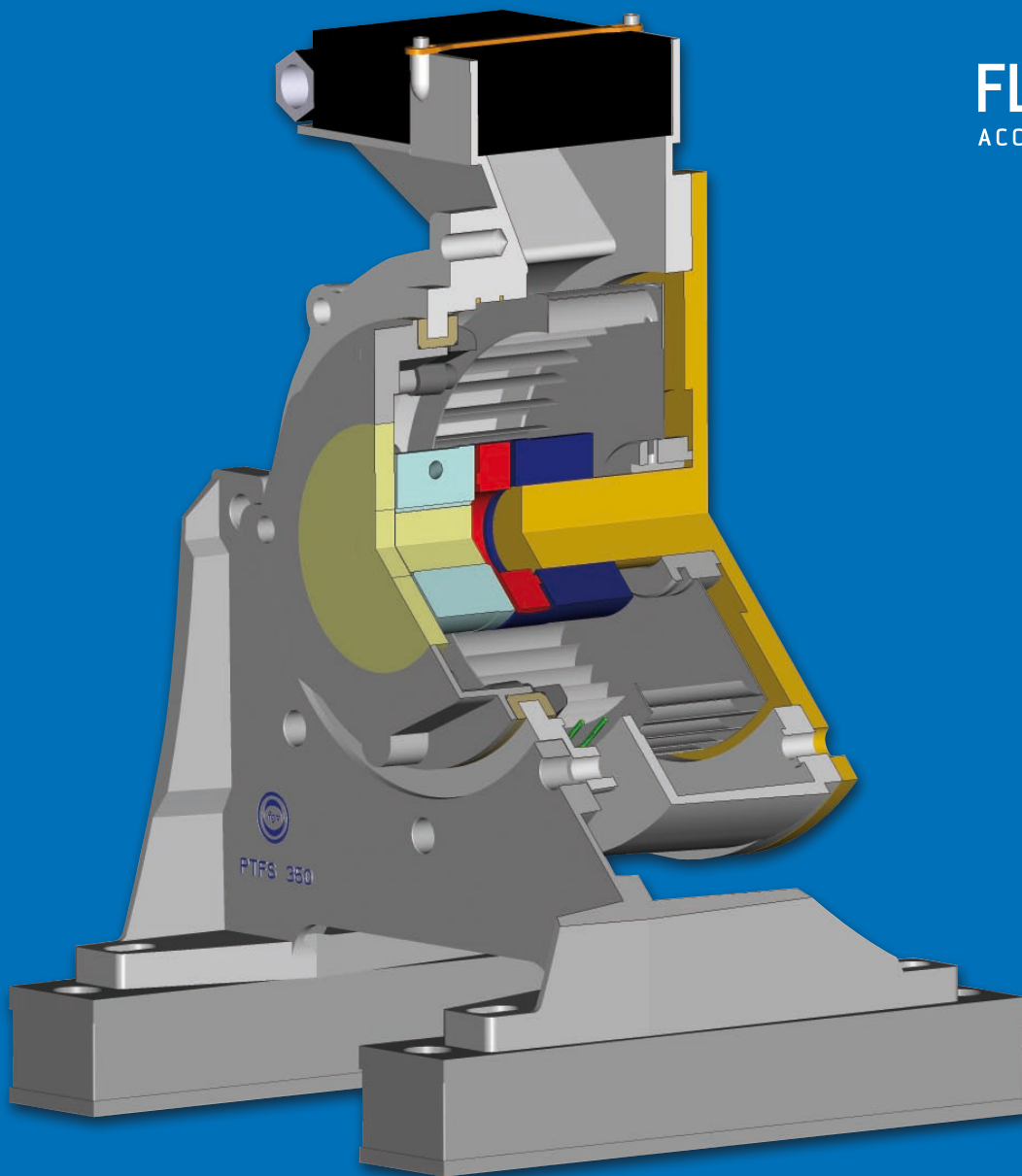
WASTED TIME



Looking for individual components



Many manufacturers offer a 3D configuration service; however, in most services only individual components are available. The question whether and how these individual components can be assembled into a sensible component group, cannot be answered with these configurations. Thus it's still up to the design engineer to do this manually and, in case of doubt, do this for each component individually.



FLUIDWARE® 3D
ACCELERATING YOUR PROGRESS

powered by
ACATEC®
rapid sales & engineering

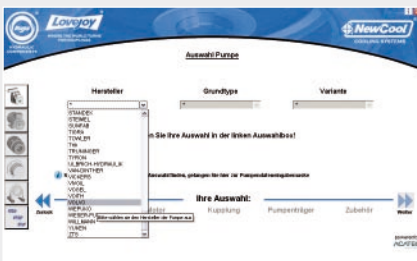
3D

COMPONENT GROUPS IN THREE STEPS



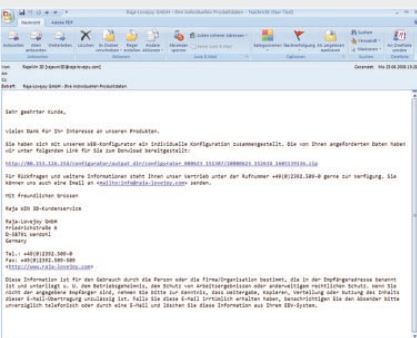
STEP 1: REGISTRATION

Immediately after registration, you will receive your personal access data to FLUIDWARE®3D via e-mail. Following login you can now select from more than **5,000 different types of pumps from over 100 of the world's leading pump manufacturers**. Thanks to the integration of the selected RAJA LOVEJOY program to couplings for stationary and mobile applications as well as rigid or damped bellhousing (pump adapter) for IEC motors, and the corresponding accessory components, FLUIDWARE®3D makes it possible to configure the component group of your choice online.



STEP 2: CONFIGURATION

You begin the configuration of your component group by selecting the **pump**. The FLUIDWARE®3D database contains all common types of pumps made by the leading manufacturers. You choose the **manufacturer**, the **basic model** and the respective **alternative**. Then you select the appropriate motor: here you differentiate between **type of motor**, **motor speed**, **performance in kilowatts**, **overall size**, **design** and **flange dia**. Then you select the **coupling**, which is configured by choosing **drivetrain output**, and the corresponding **coupling component**. In the **bellhousing** (pump adapter) module you select between **rigid**, **damped** and/or **cooling bellhousings** (pump adapter) and determine the manner for special processing, such as assembly or leakage bores (if feasible). Under accessories you can additionally add **foot-brackets** as well as **damping elements** to your configuration. To complete the configuration, select the export format for your configuration. The following file formats in 3D, or alternatively 2D, are available: **STEP, IGES, DXF and PDF**.



STEP 3: FILE-DOWNLOAD

After you have completed your configuration, you will be informed via e-mail that your 3D component group has been computed and you receive a link from where you can download the completed data.

Please contact



Raja-Lovejoy GmbH
Friedrichstraße 6
D-58791 Werdohl

Phone +49/2392/509-0
Fax +49/2392/509-509

info@rajalovejoy.com
www.rajalovejoy.com